



SOT-23 Plastic-Encapsulate MOSFETS

MK2302

N-Channel 20-V(D-S) MOSFET

V(BR)DSS	RDS(on)MAX	ID
20	45 @4.5	2.8A
	55 @2.5	

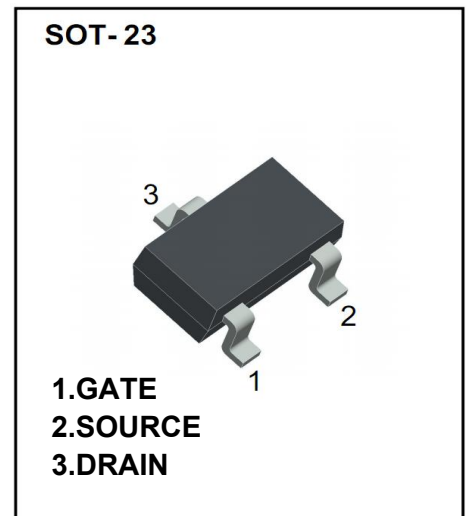
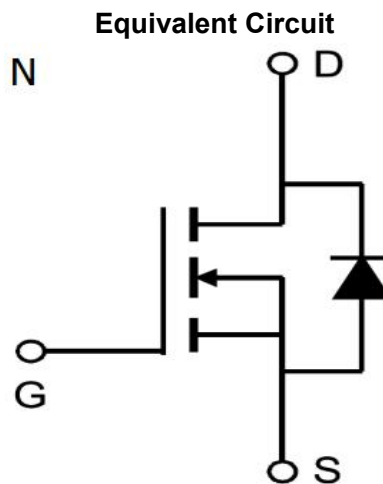
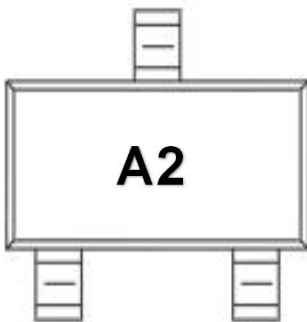
FEATURE

※ FE FE

APPLICATION

※ DC/DC C D

MARKING



Maximum ratings (Ta=25°C unless otherwise noted)

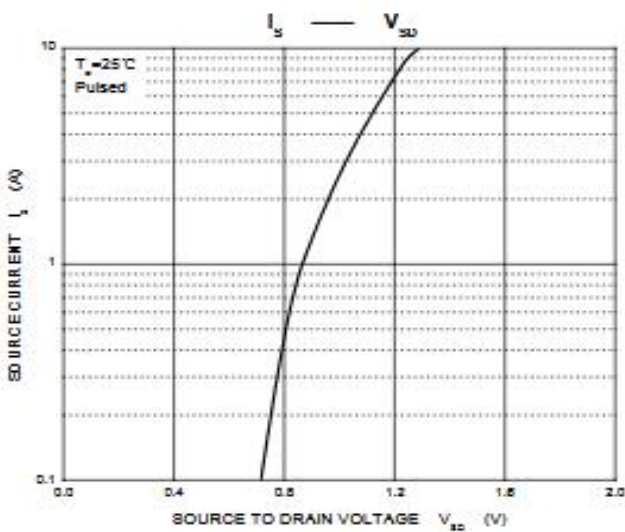
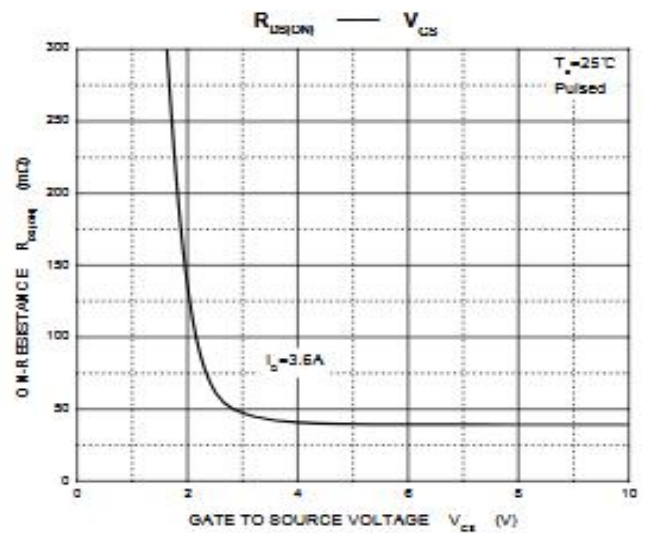
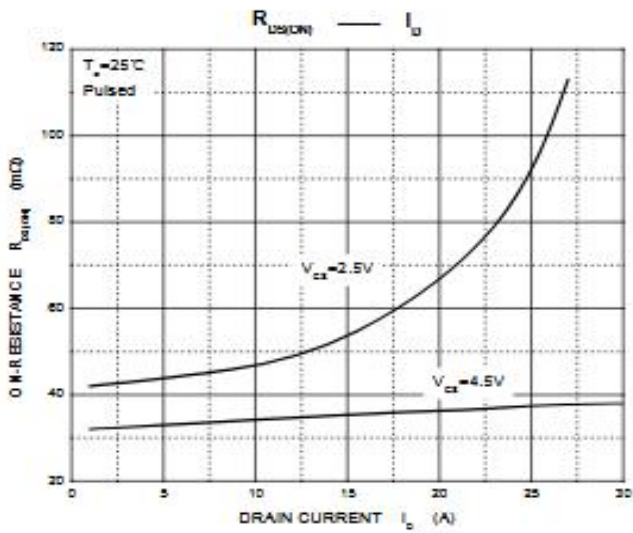
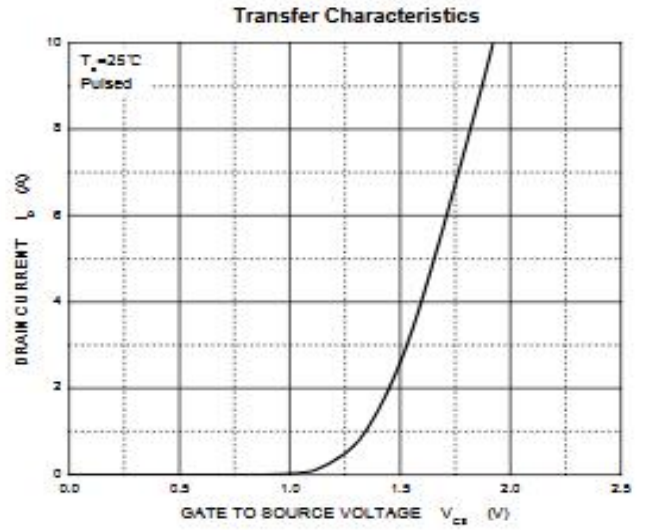
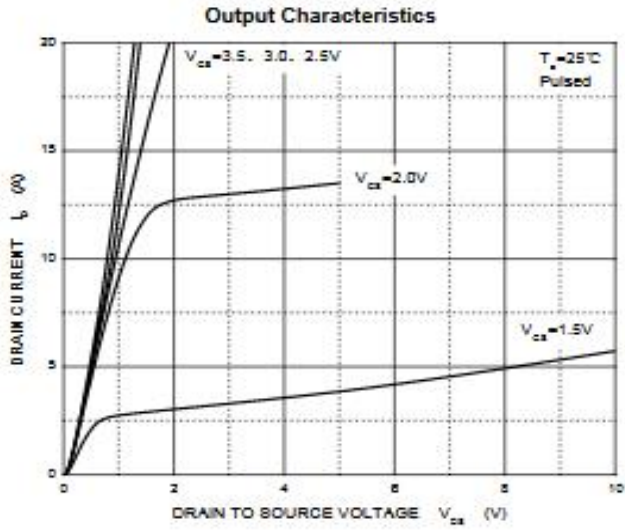
Parameter	Symbol	Value	Unit
D -	D	20	
G -	G	12	
C D C	D	2.8	A
D C	D	20	
C -D C (D C)		0.8	
D	D	0.35	
A (5)	A	357	°C/
		150	°C
	G	-55 +150	°C

Static Electrical Characteristics (Unless Noted)

Parameter	Typ	Max	Unit
Static			
D -			
G - %		1.1	
G -		100	A
			A
D @ - @ EPQ -			
F			
D			
Dynamic			
90.0 2			
G - W,U4CP W,U4CY]			
G -			
G			
Switchingb			
-			

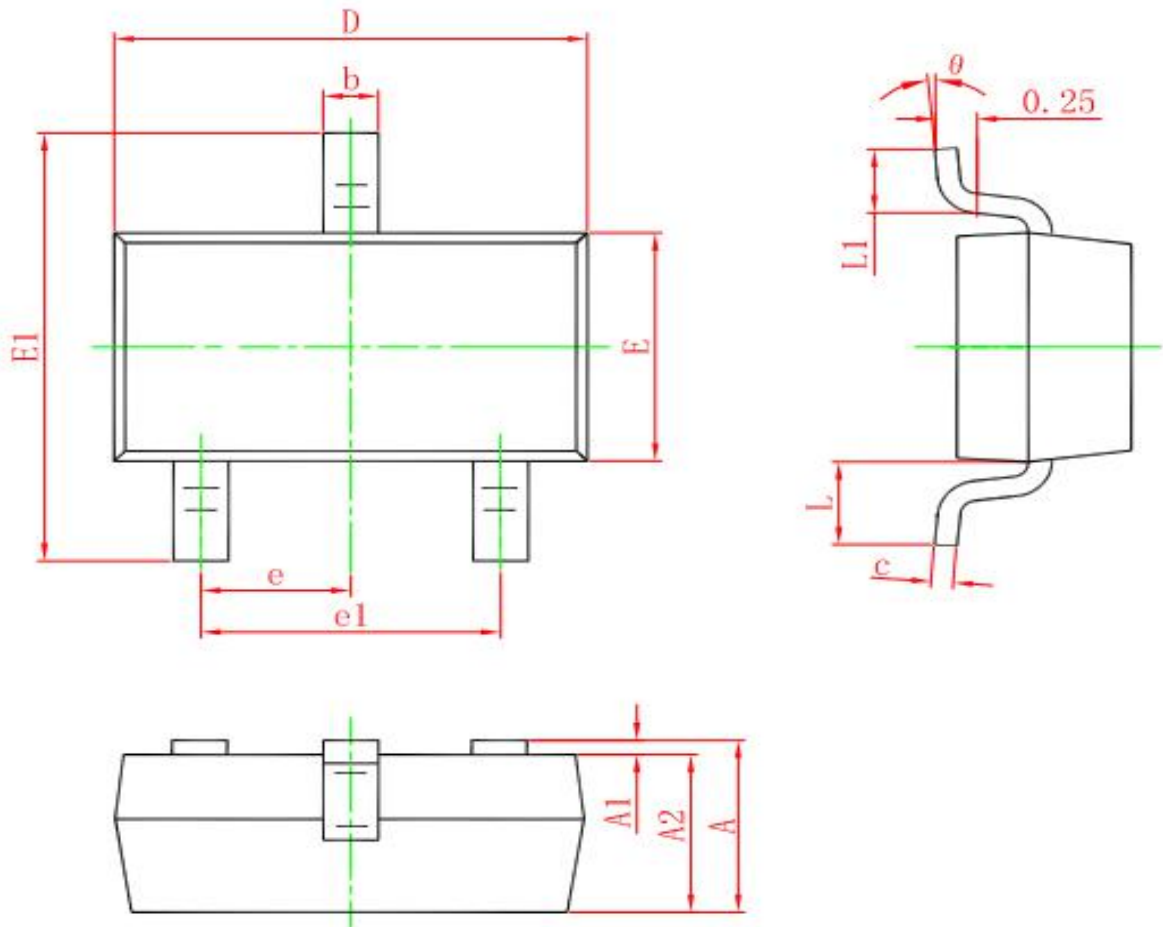


TYPICAL ELECTRICAL AND THERMAL CHARACTERISTICS





SOT-23 PACKAGE OUTLINE DIMENSIONS



Symbol	Dimensions In Millimeters		Dimensions In Inches	
	Min.	Max.	Min.	Max.
A	0.900	1.150	0.035	0.045
A1	0.000	0.100	0.000	0.004
A2	0.900	1.050	0.035	0.041
b	0.300	0.500	0.012	0.020
c	0.080	0.150	0.003	0.006
D	2.800	3.000	0.110	0.118
E	1.200	1.400	0.047	0.055
E1	2.250	2.550	0.089	0.100
e	0.950 TYP.		0.037 TYP.	
e1	1.800	2.000	0.071	0.079
L	0.550 REF.		0.022 REF.	
L1	0.300	0.500	0.012	0.020
θ	0°	8°	0°	8°